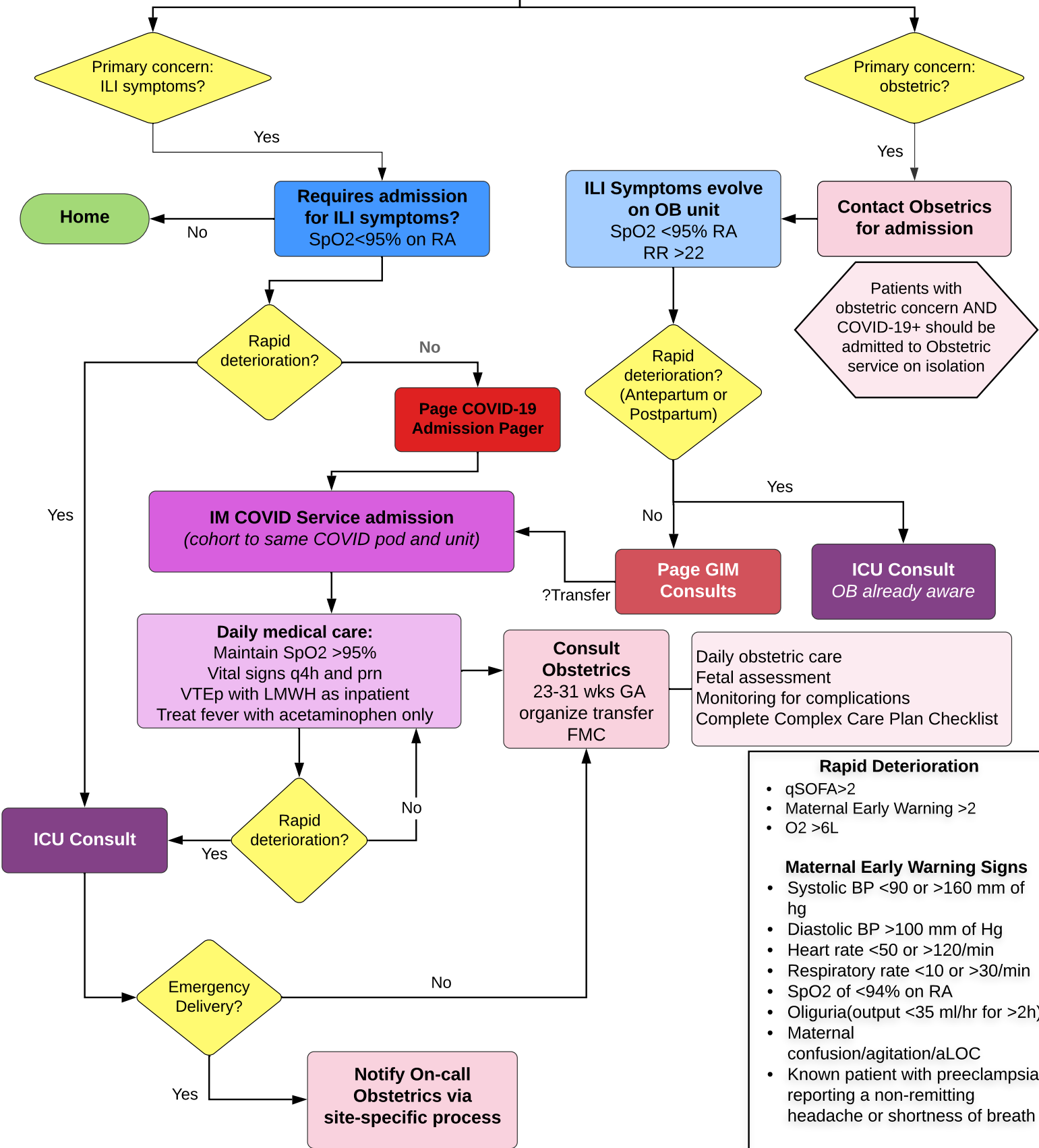


COVID-19 Care Pathway for Pregnant Women

Meghan Vlasschaert | April 15, 2020

EMS and RAAPID to follow pre-established protocols such that women 23-32 weeks will be preferentially transported to FMC

Pregnant woman presents to medical attention



For STAT Assessments Contact
 FMC: x44206 | pgr 06072 PLC: x35988
 RGH: x33562 | pgr 06694 SHC: pgr 12219

- Rapid Deterioration**
- qSOFA > 2
 - Maternal Early Warning > 2
 - O2 > 6L
- Maternal Early Warning Signs**
- Systolic BP < 90 or > 160 mm of hg
 - Diastolic BP > 100 mm of Hg
 - Heart rate < 50 or > 120/min
 - Respiratory rate < 10 or > 30/min
 - SpO2 of < 94% on RA
 - Oliguria (output < 35 ml/hr for > 2h)
 - Maternal confusion/agitation/aLOC
 - Known patient with preeclampsia reporting a non-remitting headache or shortness of breath
- qSOFA**
- Systolic BP < 100
 - Respiratory rate > 22
 - aLOC